

JANUARY 30TH, 2024

## NEWSLETTER NO. 1

# Principal's Report

Hello everyone,

Welcome back! I trust you had a restful break and are feeling excited about starting the school year for 2024. We certainly are!

This term, our students will be learning about "Space", and it will be highlighted with a visit from the Science Discovery Dome in March.

Over the break, Miss Allen, Miss Fell, Mrs Philp, Frankie and Miss B attended five days of DATA WISE professional learning, delivered by Harvard University Graduate School of Education. (You may recall Ms de Haan, Miss Elliott and myself attend in 2023). This year I also attended, but as a Teaching Fellow. A teaching fellow is there to guide and support all school teams with the DATA WISE learning. This is an invite only offer so I was extremely humbled and honored to be invited. It was extremely valuable learning, and we are looking forward to using this knowledge to improve the teaching and learning across the school with an equity lens.

This year, we will continue with our Visible Wellbeing journey, for new families here is the link to a short clip for more information,

<https://youtu.be/dQjKzjuJH9I>. The training is funded by the Department of Education Mental Health initiative. We will be making wellbeing more visible by using the wellbeing cues of what we can see, hear and feel. Our term one focus is "Relationships" (the "R" in the SEARCH framework).

School Council nominations open on February 1st, and I am also asking for people to join the Parents, Teachers and Friends Association (PTFA). The PTFA is responsible for organising community building and fundraising events. They will meet, roughly once a month, at a time that is convenient to the majority of members. Please phone the office if you would like to join.

I am looking forward to having more parents in the classrooms and working alongside our amazing staff to support our community.

Have a wonderful week,

Mel



## Term 1 Dates

### JANUARY

29th Teacher's return

30th Grade 1-6 students  
return

### FEBRUARY

1st School Council  
nominations open

5th Prep students begin

7th Science of Reading parent  
information night

13th Come and Play session 1  
for 2025 prep students

15th Wattle Glen PS

Swimming trials- grade 3-6

20th Kaboom Sports and  
Welcome back BBQ

School Council nominations  
close

23rd Sugarloaf District  
Swimming - selected  
students

26th School Council AGM

28th Division Swimming -  
students who have qualified

### MARCH

8th Curriculum Day - No  
students attend school

11th Public Holiday - Labour  
Day

13th/14th/15th NAPLAN

21st Harmony Day

27th Last Day of Term 1-  
School Finishes at 2:20pm

28th Good Friday

### APRIL

15th Term 2 starts

# School council elections – information for parents

## **What is a school council and what does it do?**

All government schools in Victoria have a school council. They are legally constituted bodies that are given powers to set the broad direction of a school, in accordance with Ministerial Order 1280 Constitution of Government School Councils, and the Education and Training Reform Act 2006. In doing this, a school council may directly influence the quality of education for students.

## **Who is on the school council?**

For most primary school councils, there are several possible categories of membership:

A mandated elected parent member category – more than one-third of the total members must be from this category. Department employees can be parent members at their child's school providing that they are not engaged in work at the school.

A mandated elected school employee member category – members of this category make up no more than one-third of membership. The principal of the school is automatically one of these members.

An optional community member category – members are co-opted by a decision of the council because of their special skills, interests or experience. Department employees are not eligible to be community members.

A small number of school councils have nominee members.

Generally, the term of office for all members is two years. The term of office of half the members expires each year, creating vacancies for the annual school council elections.

## **Why is parent membership so important?**

Parents on school councils provide important viewpoints and have valuable skills and a range of experiences and knowledge that can help inform and shape the direction of the school.

Those parents who become active on a school council find their involvement satisfying and may also find that their children feel a greater sense of belonging.

## **Do I need special experience to be on school council?**

Each member brings their own valuable skills and knowledge to the role, however, in order to successfully perform their duties, councillors may need to gain some new skills and knowledge.

It is important to have an interest in your child's school and the desire to work in partnership with others to help shape the school's future.

## **Code of conduct for school councillors**

School councils in Victoria are public entities as defined by the Public Administration Act 2004.

School councillors must comply with the Code of Conduct for Directors of Victorian Public Entities issued by the Victorian Public Sector Commission. The Code of Conduct is based on the Victorian public sector values and requires councillors to:

- act with honesty and integrity – be truthful, open and clear about their motives and declare any real, potential or perceived conflict of interest and duty
- act in good faith in the best interests of the school – work cooperatively with other councillors and the school community, be reasonable, and make all decisions with the best interests of students foremost in their minds
- act fairly and impartially – consider all relevant facts of an issue before making a decision, seek to have a balanced view, never give special treatment to a person or group and never act from self-interest

- use information appropriately – respect confidentiality and use information for the purpose for which it was made available
- exercise due care, diligence and skill – accept responsibility for decisions and do what is best for the school
- use the position appropriately – not use the position as a councillor to gain an advantage
- act in a financially responsible manner – observe all the above principles when making financial decisions
- comply with relevant legislation and policies – know what legislation and policies are relevant for which decisions and obey the law
- demonstrate leadership and stewardship – set a good example, encourage a culture of accountability, manage risks effectively, exercise care and responsibility to keep the school strong and sustainable.

### **Indemnity for school council members**

School councillors are indemnified against any liability in respect of any loss or damage suffered by the council or any other person in respect of anything necessarily or reasonably done, or omitted to be done by the councillor in good faith in:

a. the exercise of a power or the performance of a function of a councillor, or the reasonable belief that the act or omission was in the exercise of a power or the performance of a function of a council.

In other words, school councillors are not legally liable for any loss or damage suffered by council or others as a result of reasonable actions taken in good faith.

### **How can you become involved?**

By participating in, and voting in the school council elections, which are held in Term 1 each year. However, ballots are only held if more people nominate as candidates than there are positions vacant. In view of this, you might consider:

- standing for election as a member of the school council
- encouraging another person to stand for election.

### **What do you need to do to stand for election?**

The principal will issue a Notice of Election and Call for nominations in Term 1 of each year. Council elections must be completed by 31 March, unless varied by the Minister for Education.

If you stand for election, you can arrange for someone to nominate you as a candidate or, you can nominate yourself in the parent member category. You can only be nominated by another member of the same electorate that you are eligible for (e.g. a member of the parent electorate may only nominate another parent of that electorate)

Department employees with a child enrolled at a school where they are not engaged in work, are eligible to nominate for parent membership at that school.

Return your completed nomination form to the principal within the time stated on the Notice of Election. You will receive a Nomination Form Receipt via post, email or by hand delivery.

Generally, if there are more nominations than vacancies a ballot will be conducted in the two weeks after the call for nominations has closed.

### **Remember**

Consider standing for election to school council.

Ask the principal for instructions if you are not sure what to do.

Be sure to vote if the election goes to ballot.

Contact the principal if you are unsure about what is required at any stage of the election process.

FORM 2: NOTICE OF ELECTION AND CALL FOR NOMINATIONS  
(Formerly Schedule 4: Notice of Election and Call for Nomination)

An election is to be conducted for members of the school council of

.....Wattle Glen Primary School.....

Nomination forms may be obtained from the school, from Feb 1st, and must be lodged by 4.00 pm on:

.....15..../...02...../...2024..... .

The ballot (if required) will close at 4.00 pm on:

... ..01..../...03..../.....2024..... .

Following the closing of nominations a list of the nominations received will be posted at the school. The terms of office, membership categories and number of positions in each membership category open for election are as follows:

MEMBERSHIP CATEGORY	TERM OF OFFICE	NUMBER OF POSITIONS
Parent member	From the day after the date of the declaration of the poll in 2024... to and inclusive of the date of the declaration of poll in 2026 .....	5
School employee member	From the day after the date of the declaration of the poll in 2024... to and inclusive of the date of the declaration of poll in 2026 .....	2
Community member	From the day after the date of the declaration of the poll in 2024... to and inclusive of the date of the declaration of poll in 2026 .....	1

If the number of nominations is less than the number of vacancies, a notice to that effect and calling for further nominations will be posted in a prominent position at the school.

Melanie McLennan.....  
Principal signature



Wattle Glen  
PRIMARY SCHOOL

# Join us for our 2024 Welcome Back BBQ

All students and their families are invited

Tuesday  
20th of February

3:30pm-5:30pm

Sausages in bread, drinks and icy poles are available for purchase

## Kaboom Sports

will be holding a 2 hour activity session for all  
students and their families to participate in



# WGPS PTFA FUNDRAISING AND COMMUNITY EVENTS

## EVENTS

*Term 1 Events- let us know if  
you can help*



### Easter Raffle

We ask for assistance for

- putting the raffle tickets together and distributing them to the students
- Putting together the raffle prizes

### Call out for donations

We ask for assistance for

- emailing and asking for donations for our raffles for the upcoming fete
- collecting donations for select auction



If you would like to help with any of  
these events please email the office or  
phone 9438 1259

# Camps, Sports and Excursions Fund (CSEF)

The Camps, Sports and Excursions Fund helps eligible families to cover the costs of school trips, camps and sporting activities. If you have a valid means-tested concession card, such as a Veterans Affairs Gold Card, Centrelink Health Care Card or Pensioner Concession Card, or are a temporary foster parent, you may be eligible. There is also a special consideration category for asylum seeker and refugee families. Payment amounts this year will probably be the same as 2023, \$125 for eligible primary school students. Payments are made direct to the school to use towards expenses relating to camps, excursions and sporting activities for the benefit of your child. It is important that funding made available in 2024 supports students to participate in school trips, camps and sporting activities this year rather than being held for future years. This funding can also be used in conjunction with any funding accrued from previous years. If you applied for CSEF through our school last year, you do not need to complete an application form this year, unless there has been a change in your family circumstances.

If you would like to apply for the first time, please contact the school office on 9438 1259 and ask for an application form. You can also download the form, and find out more about the program and eligibility, on the Department of Education and Training's Camps, Sports and Excursions Fund web page ([Camps, Sports and Excursions Fund](#)) or Check with the school office if you are unsure, and please return completed forms to the school office as soon as possible.

# Come and play the Wattle Glen way in 2024!

Wattle Glen PS is inviting  
all children starting  
school in 2025 to three  
afternoon play sessions.

This is a great opportunity  
to see Wattle Glen  
Primary School, meet out  
friendly staff and form  
new friendships!

**Session one:**  
**13th of February**  
**3:45pm- 4:30pm**

**Session two:**  
**6th of March**  
**3:45pm- 4:30pm**

**Session three:**  
**21st of March**  
**3:45pm- 4:30pm**

Call or email the office to  
enrol your child in these  
exciting experiences!

 [wattle.glen.ps@education.vic.gov.au](mailto:wattle.glen.ps@education.vic.gov.au)







# WATTLE PLAYGROUP



COME AND JOIN US AT WATTLE GLEN PRIMARY SCHOOL FOR A FUN AND EDUCATIONAL PLAYGROUP. PLAYGROUP IS DESIGNED TO HELP CHILDREN SOCIALISE AND LEARN SOME FUNDAMENTAL SKILLS BEFORE ENTERING PRIMARY SCHOOL.

Starting  
back on  
February  
9th

## WHO CAN JOIN US?

We invite all children under the age of 6!

Our playgroup is catered to all ages as we have created a space that encourages free play, while also providing the children with opportunities to learn new skills and concepts. (We do kindly ask that children under the age of 2 to be supervised by a carer at all times.)

## WHAT TO BRING?

Please bring along your child's drink bottle and their hat for outside play.

We encourage personal toys to stay at home as we have a large variety of activities and toys for children to play with.

## WHEN?

Every Friday during the school term.

11:30-12:30

(New time for 2024)

Fruit will be provided.

## WHERE?

Wattle Glen Primary School  
16-24 Reynolds Road, Wattle Glen.  
Enter the school via gate 1 on Sunnyside Crescent

## CONTACT US...

16-24 Reynolds Road, Wattle Glen Vic 3096

Phone: 9438 1259

Email: [wattle.glen.ps@education.vic.gov.au](mailto:wattle.glen.ps@education.vic.gov.au)

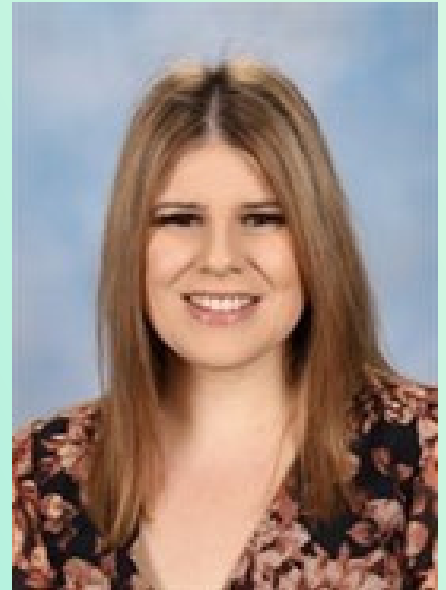
Website: [wattlegps.vic.edu.au](http://wattlegps.vic.edu.au)



# Meet the staff

Stacey Bilchouris, Teacher

In 2013, I began studying for a double degree, Bachelor of Education / Bachelor of Applied Sciences (Disability), at RMIT. I then completed a Master's of Learning Intervention (Disability) at The University of Melbourne. Since then, I have taught the early years in various mainstream and special education settings in the northern suburbs.



Every child is unique and should receive high-quality teaching instruction underpinned by evidence-based practices. Additionally, I consider the child's social development, emotional wellbeing, and academic aspects to ensure all elements are supported.

I have a very close and supportive family who strongly value a high-quality education. My mum, Dita, is the glue to our family and is always there for us all. My dad, Vic, is a computer programmer, and my brother, Adam, is studying for his Master's in spatial statistics and hopes to complete further study. In my spare time, I love spending time with my friends and enjoying trying new things, especially eating out at lovely restaurants throughout Victoria. I also enjoy the theatre and watching the cricket and tennis.

# Meet the staff

Frances Mylonopoulos,  
Occupational Therapist

I have been working in Paediatrics for 10 years, following completion of a Bachelor of Occupational Therapy and Graduate Certificate in Occupational Therapy (Paediatrics).

I believe that every child is unique, and each follow their own developmental trajectory.

Connecting with students and giving them a voice on their learning journey is a key factor for successful participation. No matter how big or small the successes, children should be celebrated for their hard work.

I enjoy travelling with my husband and two kids on the holidays and spend lots of time exploring local sites via bike and foot on the weekends. Having worked in the hospitality industry with my husband for many years, we love our food and spend lots of time cooking in our spare time.





# Community Announcements

**Blue Light**

**DIAMOND CREEK  
BLUE LIGHT  
DISCO**

**16TH FEBRUARY, 2024**

**7-9.30PM | 8 TO 13 YEAR OLDS | \$8 ENTRY**

Diamond Creek Community Centre  
28 Main Hurstbridge Road, Diamond Creek

Contact: Snr Sergeant Wayne Spence 9438 8300  
**Please ensure children have an emergency number on them.**

Diamond Creek Blue Light Disco  
 DIAMOND CREEK BLUE LIGHT DISCO

Diamond Creek  
**Rotary**  
Club

**Da Vinci**  
PIZZA PASTA GALLERY  
1408 8382  
diamondcreek.co.nz