

Wattle Glen Primary School provides a learning for life environment where engagement, achievement, resilience and wellbeing are prioritised.

SEPTEMBER 5TH, 2023

NEWSLETTER NO.15

Term 3 Dates

- SEPTEMBER**
- 6th KaBoom Sports (P-2)**
- 7th Parent teacher Interviews 1pm-6pm (onsite, face to face)**
- 8th Parent/Caregiver/Guardian survey closes**
- 9th Diamond Creek Rotary Town Fair**
- 11th Cafe 4060 operating PTFA Meeting afterschool, in room 4**
- 14th R U OK? Day Wear Yellow**
- 15th Last Day of Term, 2:20 dismissal**
- JSC Footy Day- wear your footy gear and buy a hot pie for lunch**

Principal's Report

Hello Everyone,

Thank you to all of the Dad's and special people who attended our 'Donuts with Dad' event last week. It was lovely to see all of the happy faces. Extended thanks to Miss Fell who organised the event, Ayman's Dad (Karim) who helped with the donuts and Daniel's Donuts for supplying the delicious donuts. Thank you to our PTFA who worked together to provide and compile the Father's Day raffle, and well done to the lucky Dad's who received one of the prizes. The Father's Day stall was also a great success with lots of Dad's waking up to a present on Father's Day.

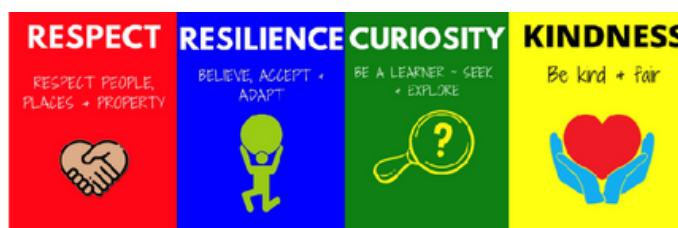
The grade 5/6 and 3/4 Hooptime events also occurred over the past fortnight. Everyone had a great day and it is very pleasing to how well our students behave when they are on an excursion. Our grade 5/6 "All Stars" team made it through to the grand final, narrowly missing out on the win by just 5 points. Parent teacher interviews will be occurring on Thursday, so please make sure you book in an appointment. This is NOT a student free day. Student's will have a normal program for the first three sessions of the day, and then they will be spending the afternoon at Pepper's Paddock to eat their lunch, and having an extended play at the park.

At our school council meeting last night we discussed car parking around the school. Our local residents have been in contact about the struggle to get into their drive way, particularly when it is raining. We will investigate getting our walking school bus back up and running (collection point is at the crossing near Pepper's Paddock) to help ease congestion on Sunnyside Cres, Warrington Cres and Reynolds Road.

Our PTFA will be holding a PTFA meeting next Monday (the 11th) afterschool, in room 4. Everyone is welcome and we are looking for new members to help with CAFE 4060, and our fundraising efforts. If you are able to make it please join the meeting. If you are able to assist, but can't make the meeting, please contact the office 9438 1259, and someone from PTFA will get in touch with you.

Have a great week,

Mel



School Council 2023: President: BJ McNeilly Vice President: Andrew Spence
Treasurer: Jayde Sheffield Secretary: Alison Wylie PTFA: Sarah Suban
General Members: Simon Braham, Rebecca Beasley, Megan Staley, Kylie D'Amico DET: Meredith Fell, Michelle de Haan Executive Officer: Mel McLennan

Stars of the Week

Week 7
P/1 Leila
1/2 Darcy
2/3 Isaac
5/6 Hunter



Week 8
P/1 Blake
1/2 Billie
2/3 Scarlett
4/5 Emma
5/6 Jaxon

Learning Showcase

In week seven, grade 1/2 showcased their understanding of coding, and how they have been coding pathways for the BeeBots to a "secret" location.



In week eight, grade 5/6 showcased their understanding of information reports, the Fibonacci sequence and using Scratch for coding.

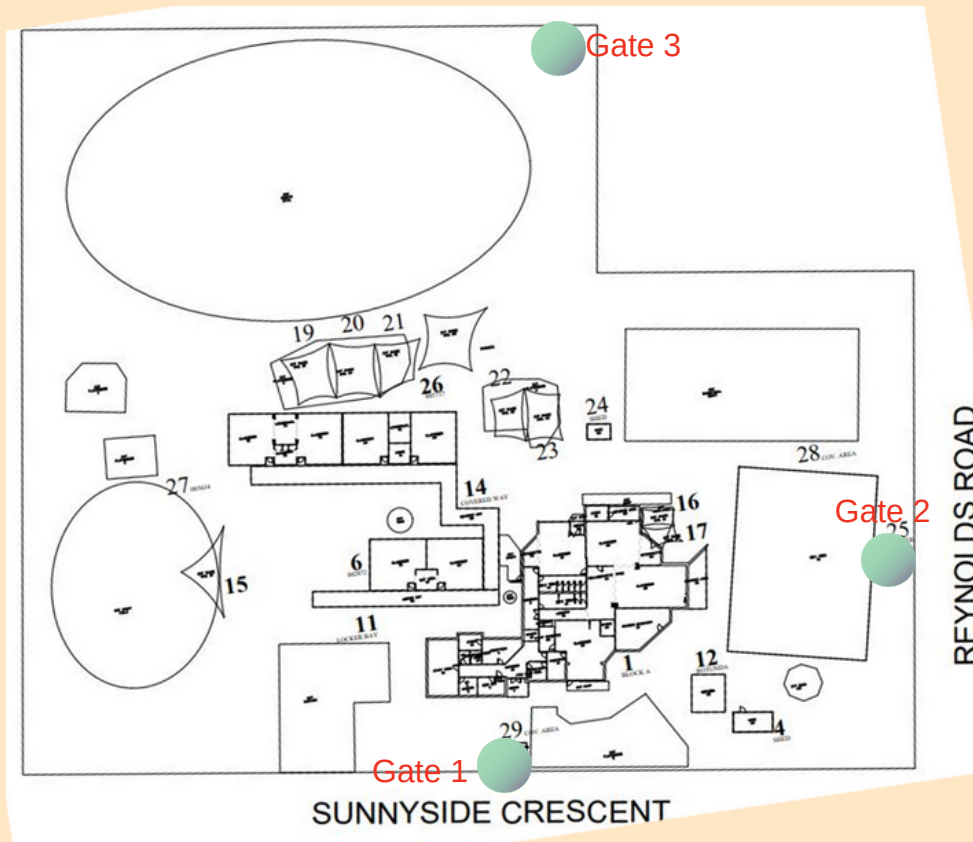


Congratulations to our Father's Day raffle winners!



Parking around our school

Warrington Crescent is the best place for parking if your child exits through gate 3.



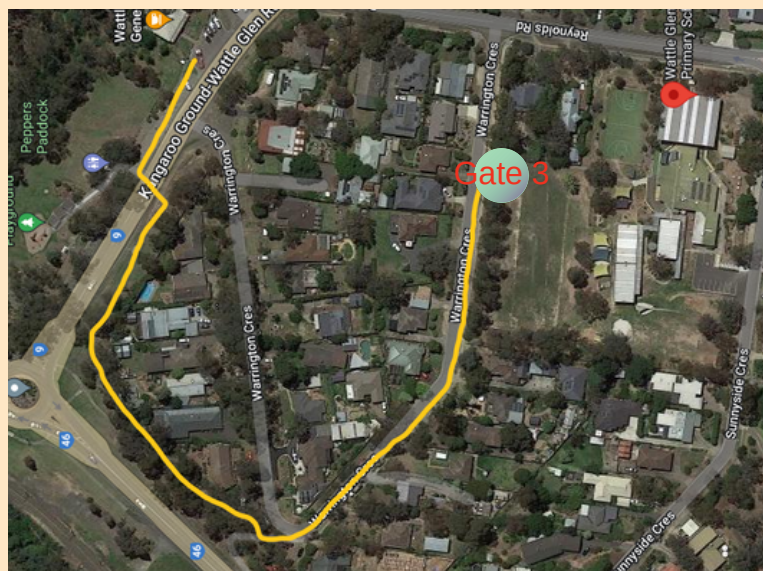
Reynolds Road is the best place for parking if your child exits through gate 2. This is **2 minute parking**, essentially dropping children off and quickly picking up. We ask that if you are parking on the opposite side of the road, please exit your car and assist your child crossing the road. Their peripheral vision may not be fully developed until they reach 10 years of age, and this can be a very busy road.

Sunnyside Crescent is the best place for parking if your child exits through gate 1.

We ask that if you are parking opposite the school or further up Sunnyside Crescent, please exit your car and assist your child crossing the road. Their peripheral vision may not be fully developed until they reach 10 years of age.

Other options include;

Pairing your child up with a buddy they will meet at gate 3, and they walk down to Pepper's Paddock. Following the route in yellow below ensures they do not have to cross any roads, and there is a paved pathway. Alison, the crossing supervisor will get them safely across Kangaroo Ground-Wattle Glen Road.



Outside School Hours Care

Newsletter



 **Camp Australia**
Guiding Children's Growth

5/9/2023

Wattle Glen Primary School OSHC

Your
OSHC.


ROCKETEERS

A message from your Coordinator

Dear Parents, children, teachers and community members.

This week the children have asked for a animal themed program this explores ways in which we can help wildlife by understanding human impact.

The week after we will be getting outside as much as we can where weather permits, we will be reinforcing slip, slop, slap and parents please make sure children pack an extra hat.

The expanded menu has been a great hit particularly the muffins, biscuits and nachos.

As always, we greatly appreciate any feedback and comments that you may have parents, please feel free to talk to me at any time.

Have a great week

From your OSHC Coordinator

Elizabeth Brook

Activities coming up

- Animals how can we help our wildlife
- Sports learn new skills
- Spring crafts

Make a booking

Join in the fun of Outside School Hours Care activities and experiences with Your OSHC and Rocketeers.

[Book now](#)

Register free and book in 24/7 via our app

To attend our program, you must register your child. You can register an account with us at pp.campaustralia.com.au or by downloading our Camp Australia smartphone app from the Apple App Store or on Google Play. Once registered, it's easy to make bookings and manage your account.



Find out more and book now at www.campaustralia.com.au



CAFE 4060

Café 4060 will be operating again in
Term 3, on the following dates;
September 11



CAFE 4060 MENU

HOT FOOD

Patties Party Pie	\$0.50 each
Patties Sausage Roll	\$0.50 each
Cheese Toastie	\$3.00
Hot Dog	\$4.00
McCain Lil' Pizza	\$3.00 each
• Ham and pineapple	
• Margherita	

*tomato sauce available

DRINKS

Juice Boxes- all flavours	\$1.00
Water 600ml	\$1.00
Milk 200ml	Free

SNACKS

Apple, Orange, Pear	Free
Messy Monkeys-BBQ flavour only	Free



Wattle Glen
PRIMARY SCHOOL

BRIGHT STARTS

Wattle Glen Primary School invites all pre-schoolers to our Prep orientation program, called Bright Starts.



This program provides the opportunity for preschoolers to experience different aspects of school life.

Sessions:

Wednesday 19th July
Wednesday 2nd August
Wednesday 16th August
Wednesday 30th August
Thursday 14th September -
Enrolled Student session & parent catch up

Time:

2:20pm- 3:20pm

Where:

Wattle Glen Primary School
16-24 Reynolds Road, Wattle Glen
3096

How do you enrol:

Call our dedicated staff in the office,
or email to inform us that your child
will be coming to these events.

Respect

Kindness

Curiosity

Resilience



wattle.glen.ps@education.vic.gov.au



Wattle Glen Primary School



03 9438 1259



www.wattlegps.vic.edu.au

Conversation tips



Be prepared
for the
conversation

RUOK?™



Ensure you have
enough time

I'm here to hear



Find a private, quiet
place to chat



Share what you've
noticed in a
non-judgemental way



Remove
distractions



Embrace any
silences



Be present and
actively listen



Talk through ideas of
what they could do to
manage the situation



Check in regularly so
they know you care



Let them know you
want to support them

R U OK Day, September 14, 2023. Wear something yellow and show your support.

Learn more at ruok.org.au



WATTLE PLAYGROUP



COME AND JOIN US AT WATTLE GLEN PRIMARY SCHOOL
FOR A FUN AND EDUCATIONAL PLAYGROUP.
PLAYGROUP IS DESIGNED TO HELP CHILDREN
SOCIALISE AND LEARN SOME FUNDAMENTAL SKILLS
BEFORE ENTERING PRIMARY SCHOOL.

WHO CAN JOIN US?

We invite all children under the age of 6!

Our playgroup caters for all ages as we have created a space that encourages free play, while also providing the children with opportunities to learn new skills and concepts. (We do kindly ask that children under the age of 2 to be supervised by a carer at all times.)

WHAT TO BRING?

Please bring along your child's drink bottle and their hat for outside play.

We encourage personal toys to stay at home as we have a large variety of activities and toys for children to play with.

WHEN?

Every Friday
during the school
term.
10-11am
Fruit will be
provided.

WHERE?

Wattle Glen Primary School
16-24 Reynolds Road, Wattle Glen.
Enter the school via gate 1 on
Sunnyside Crescent

CONTACT US...

16-24 Reynolds Road, Wattle Glen Vic 3096

Phone: 9438 1259

Email: wattle.glen.ps@education.vic.gov.au

Website: wattlegps.vic.edu.au



FOOTY DAY

JSC has decided to run a last day of term fundraiser- Footy Day.

Dress up in your footy team colours and order a pie for lunch.

Pies are \$4 each
(ordering available via Compass tomorrow)



Community Announcements

ST ANDREWS
PRIMARY SCHOOL

BAND NIGHT



**FRIDAY
SEPT 8**

**St Andrews
Hotel**

Our student Rock Bands and soloists hit the stage at 6pm, with some very special guests to follow.


**Silent Auction & Raffle to
Win an Electric
Guitar & Amp**

**Dinner from 5:30
Kick off at 6pm**

Contact the St Andrews Hotel on
9710 1201 to book a table for dinner

Sing • Act • Dance

Perform in a Show! ★



Holiday Camps


We give Kids Confidence
Ages 5 to 13 years


Eltham College
Monday 25 to Thursday 28 September (4 days)
9am to 3pm + FREE extended hours!!

For full details and to BOOK online
www.kidsupfront.com.au

*We will comply with COVID restrictions

**kids
upfront**
DRAMA ACADEMY

RESERVOIR 

October 2023 

Everyday English

Living and Working in Australia

Develop your understanding of Australian culture and practice your English language skills to prepare for the Australian Citizenship Test.



www.prace.vic.edu.au



Everyday English

Living and Working in Australia

Develop your understanding of Australian culture in the community and the workplace while you build skills in speaking, listening, reading and writing English.

In this small, friendly class you will build the skills needed to:

- For the Australian citizenship test
- Confidently participate in the local community
- Develop an understanding of Australian workplace culture.

Pathways

Further study (English or vocational studies), volunteer work or employment. Undertaking the Australian citizenship test.

Workforce Australia

This course counts towards Workforce Australia mutual obligation requirements.

Prace encourages individuals with disabilities to participate in our programs and activities. This training is delivered with Victorian and Commonwealth Government funding. Prace TOID 4036



Location

Prace - Merrilands Community Centre
35 Sturdee St, Reservoir

Dates and Duration

10 Sessions

Days and hours

Wednesday (Evenings)

4 October

6:00pm - 8:30pm

or

Friday (Daytime)

6 October

9:30am - 12:30pm

Entry requirements

Permanent Resident
(must hold a current
Green Medicare Card)

Fees

Free

Register your Interest



This course is endorsed by
Learn Local.



Prace Main Office
Merrilands Community Centre - 35 Sturdee Street, Reservoir
Phone 9462 6077 | office@prace.vic.edu.au | www.prace.vic.edu.au

Daniel's[®]

— DONUTS —

Greensborough Store

DONUTS PIES MILKSHAKES COFFEE

1/35-39 Main Street, Greensborough VIC 3088

(03) 7044 3584

Mon - Thurs 6.30am - 9pm

Fri 6.30am - 10pm

Sat - Sun 7am - 10pm

Spring School Holidays



Neighbourhood Houses
The Heart of Our Community

Diamond Creek

Lego Fun - 5-10yrs

20 Sep, 10:00am-11:30am - \$35

Art for Kids - 6-10yrs

26 Sep, 10:00am-11:00am - \$18

Panton Hill

Bush magic 5-12 yrs

20 Sep, 10am-11am - \$10

Drama for Kids - 7-12 yrs

25 Sep 9:30am-12:30pm - \$20

Scan the QR
Code or visit our
website to book
Ph: 9433 3744



Eltham

Pottery for Kids - 8-12yrs

20 Sep 10:30am-12:00pm and
12:30pm-2:00pm - \$35

Kindy Kids Yoga 3-5yrs

22 Sep, 9:30am-10am - \$7

Primary Kids Yoga 6-12yrs

22 Sep, 10:15am-11am - \$10



livinglearningnillumbik.vic.gov.au


Nillumbik

LIVING & LEARNING
NILLUMBIK